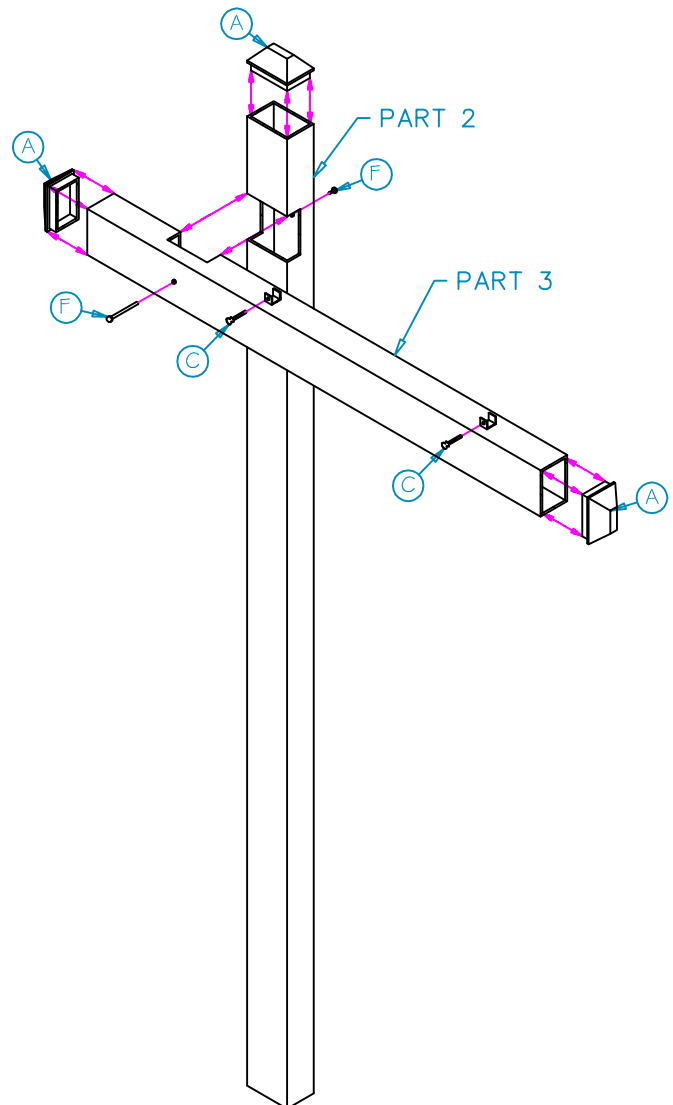
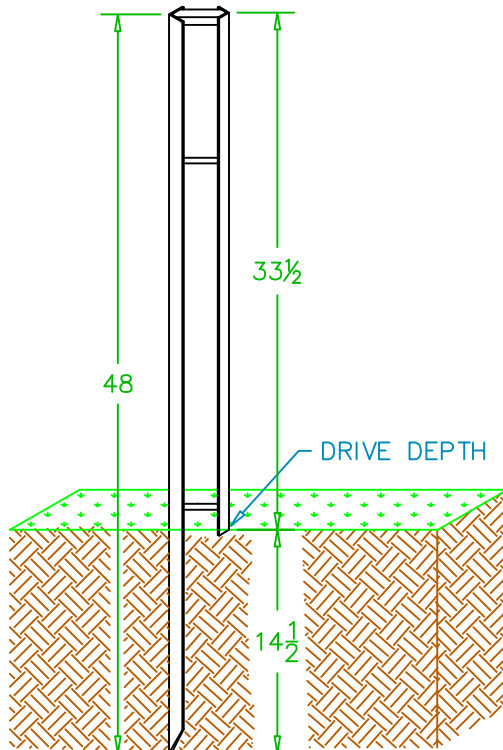


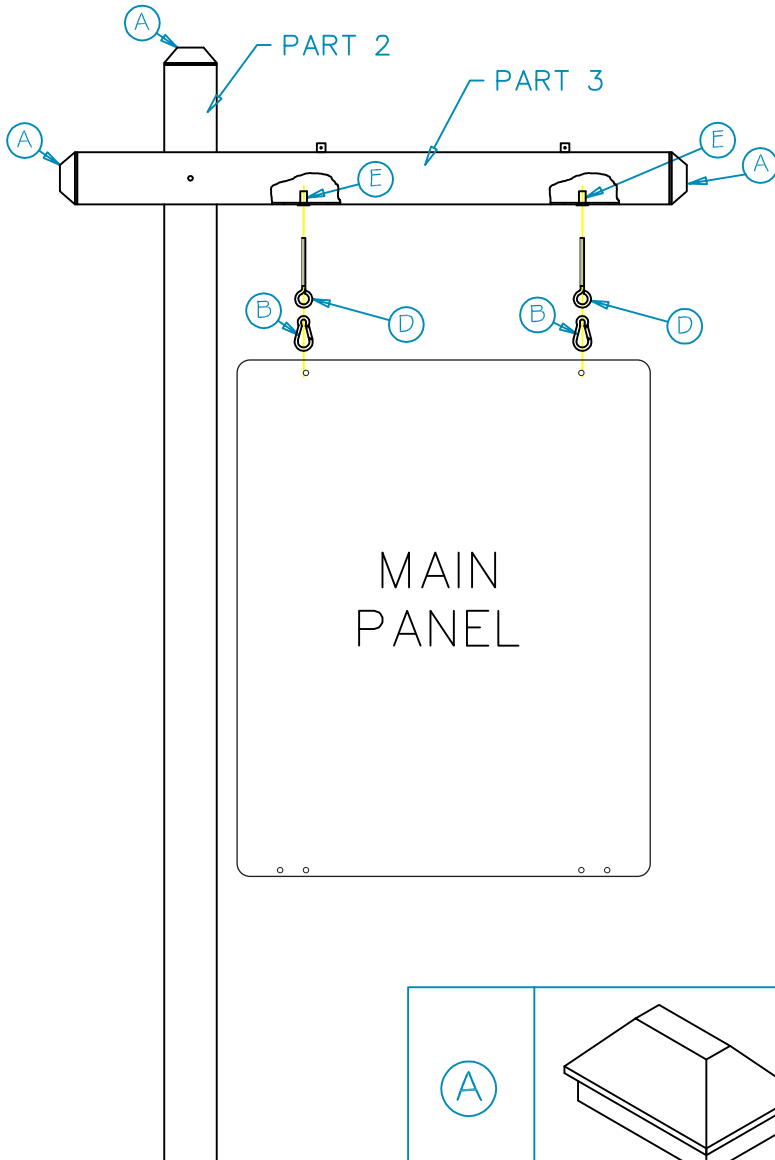
ASSEMBLY GUIDELINES FOR SWING ARM POST
PAGE 1 OF 2

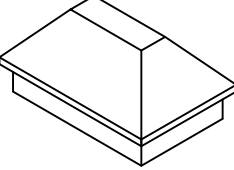


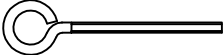
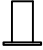

1. PLACE POINTED TIP OF PART 1 (DRIVE STAKE / ANCHOR) ON THE SURFACE OF THE GROUND.
2. USING A HAMMER, DRIVE THE STAKE INTO THE GROUND TO THE INDICATED DRIVE DEPTH.
3. SLIDE PART 2 (UPRIGHT POST) DOWN OVER PART 1 (DRIVE STAKE / ANCHOR).
4. PLACE PART 3 (CROSSBAR) INTO PART 2 (UPRIGHT POST).
5. USING PART F (SLOTTED SCREW & THREADED SLEEVE), ATTACH PART 3 (CROSSBAR) TO PART 2 (UPRIGHT POST) BY INSERTING PART F INTO TOP HOLES.
6. ATTACH PART D (EYE-BOLT) TO PART 3 (CROSSBAR).
7. ATTACH PART B (D-RING) TO MAIN PANEL.
8. ATTACH MAIN PANEL TO PART 3 (CROSSBAR) BY STARTING AT THE SIDE CLOSEST TO PART 2 (UPRIGHT POST) USING PART (D-RING) TO ATTACH MAIN PANEL TO PART D (EYEBOLT) IN PART 3 (CROSSBAR).

PART 1: DRIVE STAKE / ANCHOR



ASSEMBLY GUIDELINES FOR SWING ARM POST
PAGE 2 OF 2



(A)		(X3 PER POST) WHITE TENT CAP
(B)		(X2 PER POST) $\frac{3}{8}$ " D-RING
(C)		(X2 PER POST) 1/4-20 X $\frac{3}{8}$ " THUMB SCREW
(D)		(X2 PER POST) 1/4-20 X 3 EYEBOLT
(E)		(X2 PER POST) 1/4-20 CLINCH NUT
(F)		(X1 PER POST) 8-32 X 2" TRUSS HB BARREL BOLT ALUM. 8-32 X $\frac{3}{8}$ " SLCT TRUSS M/S 8-855